



"2008

"

2010

2008

2008

13

2009

()

.2008

2011

.2010

90

2008

.2009

(2006) %13.3 2008

680 ()

.(323) 3876 .(57)

138.7 5.7 ()

.(24.3) (292)

%1.9) 15 2008

2006 (

0.6 %4.5) 32

.(

.(2015 %3.3)

%21.1 %24.2 %31.9

) .%11.8 %11.2 %8.3

32 (%25

4 18 .2006 22

14

(136) %44) 14
 %29 %17.5
 %8 .(781
 %13 706 2006 %25
 . 75 2008
 2006 2008
 781 %57
 %33.5 .
 263
 %2.6 2008
 .%8.2 2006
 614
 (0.84) 305.6
 1.1 .
 336
 5.7 6166
 . 6220 2006 %0.9
 2006 %2.1 2008
 2008 2006 %8.2
 .2006 %9 2006 %4.9

%1.5

.0.393 0.399 2008 2006

()
()

2008 %11.2 2006 %7.7
2006

2008

4.2 7.6
% 20

% 48

% 3.7

% 14.2

% 58)

(% 41

% 6 % 34)
27

% 15

.(
%

.(0.8 % 8.4)

% 14.5

2008

)
(

(%13.3

) %13.9

%.16.4

)

/

%.21.0

(

%13.3 %21.0

)
(781 1.24

()

2		
3		
4		
8		
10		
12		
13		:
13	:	1.1
16		2.1
16		1.2.1
17		2.2.1
19	2008	3.2.1
19	PERSON'S CALORIE REQUIREMENT	1.3.2.1
21	(CALORIE COST) 1000	2.3.2.1
22	((SPACIAL PRICE INDEX	3.3.2.1
23	POVERTY LINE	4.3.2.1
27	ABSOLUTE POVERTY INCIDENCE	5.3.2.1
28	(POVERTY GAP INDICATOR)	6.3.2.1
30	(POVERTY SEVERITY INDICATOR)	:7.3.2.1
33	(POVERTY POCKETS) 2008	4.2.1
37		:
37	2008-2006	1.2
37		1.1.2
37		.

41		.
43		.
46		.
48	2008 2006	.
50	2006 2008 – 2006	2.1.2
50		.
55		.
56		.
57		.
58		.
59		.
62		3.1.2
70		4.1.2
70		.
71		.
72		.
73		.
74		.
76		.
82		:
82		1.3
84		:
85		:
86		:
89		

قائمة الجداول

19	:1
20	:2
20	:3
	:4
21 2008	
22 2008 2006 ()	:5
22 .. 2008 2006	:6
23 (2006) ()	:7
26 .() 2008	:8
27 2008 ()	:9
29 2008 2006	:10
30 2008 2006	:11
31	:12
32 2008	:13
35 2008	:14
36 2006	:15
40 2008 2006	:16
42 2008 2006	:17
45 .(%) 2008 2006	:18
2008	:19
47 (%)	:20
49 (%) 2008 2006	:21
51 (100=2006) 2008	:22
51 2006	:23
51 (100=2006) 2008	:24
61 2008	:25
70	:26
71	:27
71	:28
71 2008	:29
73 (15)	:30
74	:30

74	:31
75	:32
75	:33
76 2008	:34
76	:35
76	:36
77	:37
79 2008	:38
80 2008	: 39
80 2008	: 40
802008	:41
81 2008	: 42
81 2008	: 43
86	:44
88	:45
89	: 46
952008	:47
95 2006 2008	:48
97 2006	:49
98	:50
98 2006 2008 2006	:51
992006 2006	:52

قائمة الأشكال

1 2008 ()	:1
1 2008 ()	:: 2
1 2008	:3
1 2008	:4
1 2008	:5
1 2008	:6
31 2008	: 7
33 2008	: 8
50 2008	:9
52 2008 2006	: 10
53 2008	:11
54 2008 2006	:12
54 2008 2006	:13
55 2008 2006	:14
56 2008 2006	:15
57 2008 2006	:16
1 2008 2006	: 17
59 2008 2006	:18
60 2008 2006	:19
62 2008	:20
64 2008	: 21
65 2008 2006	:22
67 2008 2006	:23
68 (%)	:24
69 (%)	:25
84 2008	:26
85	:27
87 (%) 2008	:28
87 2008	:29
شكل 30 : نسبة الفقر الفعلية للعامين 2006 و 2008 ونسبها الافتراضية حسب السيناريوهات الثلاث لعام		
88 2008	:2008

:

:

1.1

:

	2008	2007	2008	2007	2008	2007	2008	2007
2008	%7.6	%8.8	"	"	"	"	"	"
	(%13.3)	(%35.8)	(%0.1)	"	"	"	"	"
2007	(%8.3)	(%7.0)	(%5.4)	(%9.2)	(%0.5)	(%8.3)	(%9.9)	
			2008					
	"	"	"	"	"	"	"	"
	(%4.1)	(%9.5)	(%5.8)	(%5.1)	"	"	"	"
	.2007	(%15.4)	(%3.1)	(%15.0)	(%9.3)	(%9.2)	(%10.1)	
	(%5.3)	(%25.1)						
			(2244.3)	(3887.9)	(1589.4)	(2753.5)		
						2008		

:

(%4.7)	2008	(%13.9)				2007
--------	------	---------	--	--	--	------

2008		.2008	(%18.4)
	(%13.5)		
	.(%9.8)		(%7.4)

:

(%13.1)	2007	2008	% 12.7
.2008	(%22.1)	(%9.8)	
	(%25.0) ()	
	(%13.8)	(%64) (15
)

				:
2008	(+	+)
	16.5	2007	%27.7	3586.0
				2007 13.0
				.%24.0 %39.2
	2007	2008		
	%39.2		1247.3	2008
	%16.2		716.7	2008
	.2007		%26.5	
			.%12.3	545.3
			%9.5	421.5
			.%8.4	371.9
			%41.7	
			. %31.1	
	1201.9	2008		
		2007	%36.5	322.0
	51	80.8	"	" "
2008	(+)	.
	. 5633.0	2007	%38.6	1569.4
	%24.1	2338.7	2008	
	2007	9722.2		12060.9
%15.4	1857.9		2008	
	917.5			
	609.1			%7.6
				.%5.1
	%63.7			%33.2
				.
	6427.9	2008		

	.2007	%13.6	769.3	
	1653.8	2008		
%17.3	2007	2080.1		%11.0
%8	2008		.2007	
%7	2008			2005.7
		2242		2007
				:
.2008	%2.2	%7		
.2007	%109	718.3		
%68	2007	2007	2008	
2.1	2008		2008	%56.8
				%60

)¹
.² (

:

- -

1.2.1

" 1987³ 1973

4"

	(1996)	.1
1 1996 ,	:	(3)
() 17 1989		.2
.1973		3
		.4

1989

1987

2001 1994

2004

12792

2003/2002

2006

2006

12768

.2003/2002

2008

2007

12768

2009

5

2.2.1

2003/2002

:

(Calorie Requirements)

:

:

.2008

(Calorie Intake)

:

(First Quintile)

:

:

(Dependent Variable)

(Independent Variable)

.100

(Economic of Scale)

()

:

2006)

(

()

:1

4	()
13	
5	

) 2010

18

2008

3.2.1

2006

Person's Calorie Requirement

1.3.2.1

2004

3 2

(1990)

: 2

25.2	26.7	10
28.3	29.7	11
31.7	33.4	12
41.2	43.8	13
45.0	50.1	14
51.9	56.5	15
56.4	62.0	16
59.1	66.0	17
60.1	71.5	29-18
71.2	77.6	59-30
73.7	76.7	+ 60

.2004

:

: 3

740	791	
1480	1618	5-2
1689	1924	9-6
1728	1990	10
1790	2084	11
1858	2199	12
2048	2522	13
2124	2720	14
2262	2917	15
2353	3092	16
2406	3216	17
2262	3156	29-18
2375	3167	59-30
2247	2710	60
2325		2008

.2008

2004

:

2325 2008 3

4
2008

2008

:4

()	()	
232.6	2182	
336.5	2634	
427.3	3049	
532.4	3442	
847.6	4251	
475.2	2977	

/ :

(1000) (Calorie Cost) 1000 2.3.2.1
 0.4321 2008
)
 (1000 0.3187 (5)
) 1000 0.6260 ()
 ()
 1000 0.3187 ()

() () .6

5

.2008 2006
2006 28

31

%11

2008 2006

()

:5

1000 () 2008	1000 2006 ()	
0.3187	0.2775	
0.3902	0.3367	
0.4323	0.3654	
0.4918	0.4190	
0.6260	0.5427	
0.4321	0.4092	

/ :

6

.2008 2006

2008 2006

:6

2008	2006	/
2325	2340	
2977	2772	
28.0	18.5	(%)

/ :

(Spacial Price Index(

3.3.2.1

.(7)

(2006)

()

:7

103.9	104.8	102.6	
97.8	97.6	98.2	
99.0	98.3	100	
96.7	97.1	96.2	
97.1	96.1	98.7	
95.6	96.1	94.9	
98.3	96.5	101.2	
95.6	96.1	94.8	
97.5	97.9	96.9	
97.3	97	97.8	
96.8	96	97.9	
98.8	98.2	99.8	
100.0	100.0	100.0	

Poverty Line

4.3.2.1

7

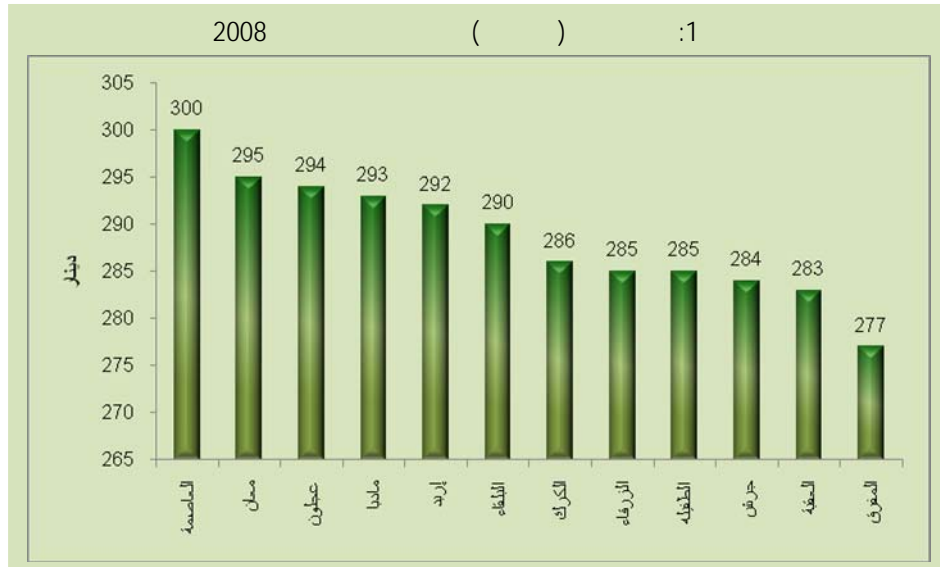
1996

(3)

.7

(Abjective poverty Line)

2008 292 ()
 138.7 (5.7) .(24.3)
 300 1664.4
 294 295
 277
 .2008 () 1



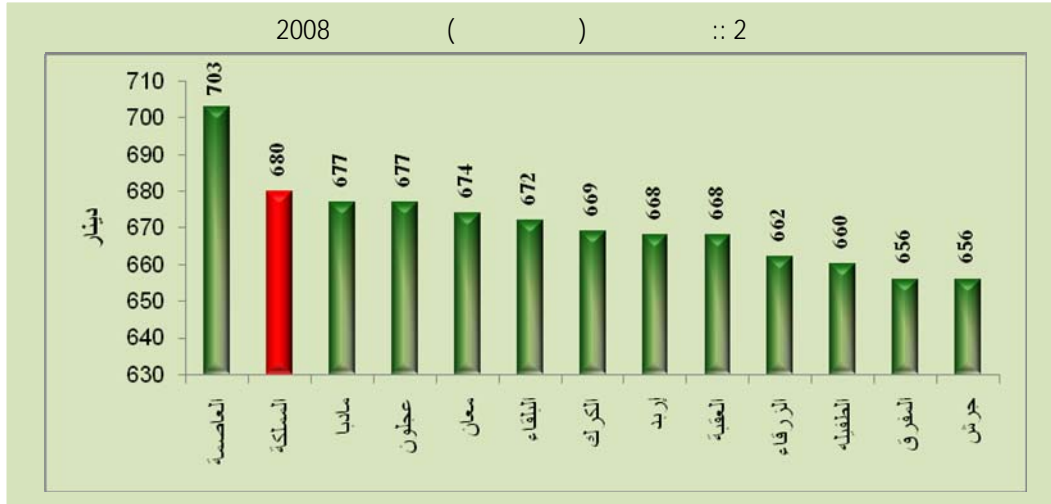
(Absolute poverty Line)⁹

¹⁰()

11 1993 .8

9 Absolute poverty line equation : $F_{well} = a + c * I_{pctotexp}$ (لوجاريثم متوسط إنفاق الفرد) + المعامل (لوجاريثم متوسط إنفاق الفرد) = الثابت + المعامل

() 2008
 11 680
 703
 656 677
 674 660
 2008 2



323 5.7 56.7
 340 6
 ()
 (0.92) (Economic of Scale)
) 388
 2211.6 184.3 (5.7) .(32.3
 372 385 403
 .(3)

10 17 1989 .10
 11 تم استخدام معدل التضخم لفترة مسح نفقات ودخل الاسرة 2006 مقارنة بنفس الفترة المقابلة لها من مسح عام 2008



)
 .2008 8 .(

() 2008 :8

()	()	()
703	403	300
672	382	290
662	378	285
677	384	293
668	375	292
656	379	277
656	372	284
677	384	294
669	384	286
660	375	285
674	379	295
668	385	283
680	388	292

Absolute Poverty Incidence

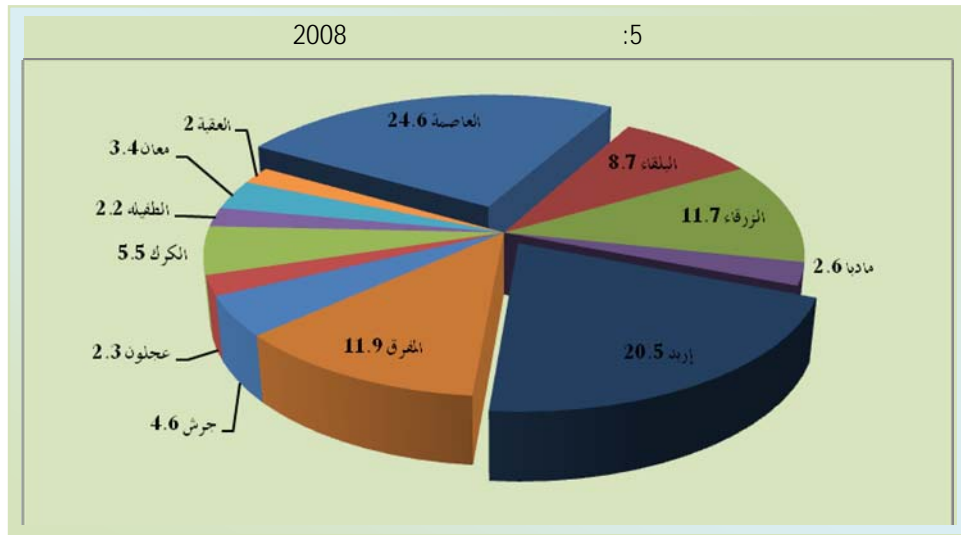
5.3.2.1

2008
 %13.3
 % 8.3
 %21.1 % 24.2
 .(9) %20.3 %14.7
 %25
 %11.9 %20.5
 %45
 .(9) % 2.3 %2.2
 %2.0

2008 () :9

% *	%	
24.6	8.3	
8.7	19.7	
11.7	11.2	
2.6	14.9	
20.5	14.7	
11.9	31.9	
4.6	20.3	
2.3	13.3	
5.5	17.1	
2.2	21.1	
3.4	24.2	
2.0	11.8	
100	13.3	

/ : *



¹³(Poverty Gap Indicator)

6.3.2.1

: .13

$$PG = \frac{\sum_{i=1}^q (Z - Y_i)}{NZ} \times 100 \%$$

: q / : Y_i : N : Z : PG

%2.6

.%1.6

%6.3

) 101.3

.2008 2006 10 .(

2008 2006 :10

) 2008 ((%) 2008	(%) 2006	
25608	1.6	1.8	
9527	4.1	3.5	
9448	1.8	2.8	
2515	2.8	2.4	
19915	2.7	2.7	
12054	6.3	6.0	
5483	4.7	4.1	
2827	3.1	4.0	
5690	3.4	4.9	
1367	2.5	4.0	
4100	5.6	3.0	
2765	3.2	4.6	
101302	2.6	2.8	

/ :

2008 :6



¹⁴ (Poverty Severity Indicator)

:7.3.2.1

%0.791
 .%1.998
 .2008
 .% 0.93
 0.468
 11
 2008 2006 :11

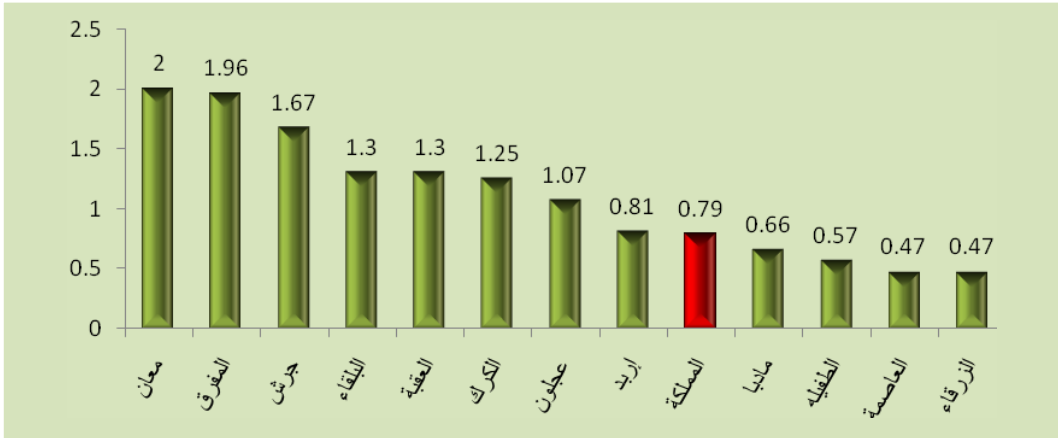
% 2008	% 2006	
0.47	0.56	
1.30	1.17	
0.47	0.83	
0.66	0.79	
0.81	0.93	
1.96	2.50	
1.67	1.36	
1.07	1.35	
1.25	1.54	
0.57	1.21	
2.00	1.02	
1.30	1.74	
0.79	0.93	

/ :

: PS

$$PS = \frac{1}{N} \sum_{i=1}^q \left(\frac{Z - Y_i}{Z} \right)^2 \times 100\%$$

شكل 7 : نسبة شدة الفقر 2008



15

:12

2008	2006	
2325	2340	
0.4321	0.4092	1000
0.3187	0.2775	1000
292	239	
24.3	19.9	
388	317	
32.3	26.4	
680	556	
56.7	46.4	
13.3	13.0	
5.7	5.7	
7057	7521	
1238	1306	
3.4	3.1	(%) %10
29.5	27.2	(%) %10
6166	6220	
1081.7	1084	
0.393	0.399	:

/

:

2008 %1.5 0.393
 2006 2008 0.399 2006
 ()
 2008 %35.1 2006 %43.9
 ()
 () 2008 %11.2 2006 %7.7
 2006
 2008
 (%60)
 .2006 %43.9 2008 %53.7

2008 :13

		%	%			%	
1678	0.0007	5.7	24.6	24769	192597	8.3	
2138	0.0062	13.9	8.7	8550	68298	19.7	
0	0	7.9	11.7	11589	91456	11.2	
0	0	10.4	2.6	2465	20027	14.9	
1705	0.0016	11.6	20.5	20836	160474	14.7	
1095	0.0038	25.6	11.9	11458	92764	31.9	
4133	0.0232	16.1	4.6	5014	36243	20.3	
0	0	10.1	2.3	2131	17783	13.3	
1950	0.0078	12	5.5	5001	42655	17.1	
0	0	16.9	2.2	2350	17424	21.1	
871	0.008	17.8	3.4	3088	26186	24.2	
1440	0.011	8.3	2.0	1869	15494	11.8	
15010	0.0026	9.5	100	99121	781403	13.3	

(Poverty Pockets) 2008

4.2.1

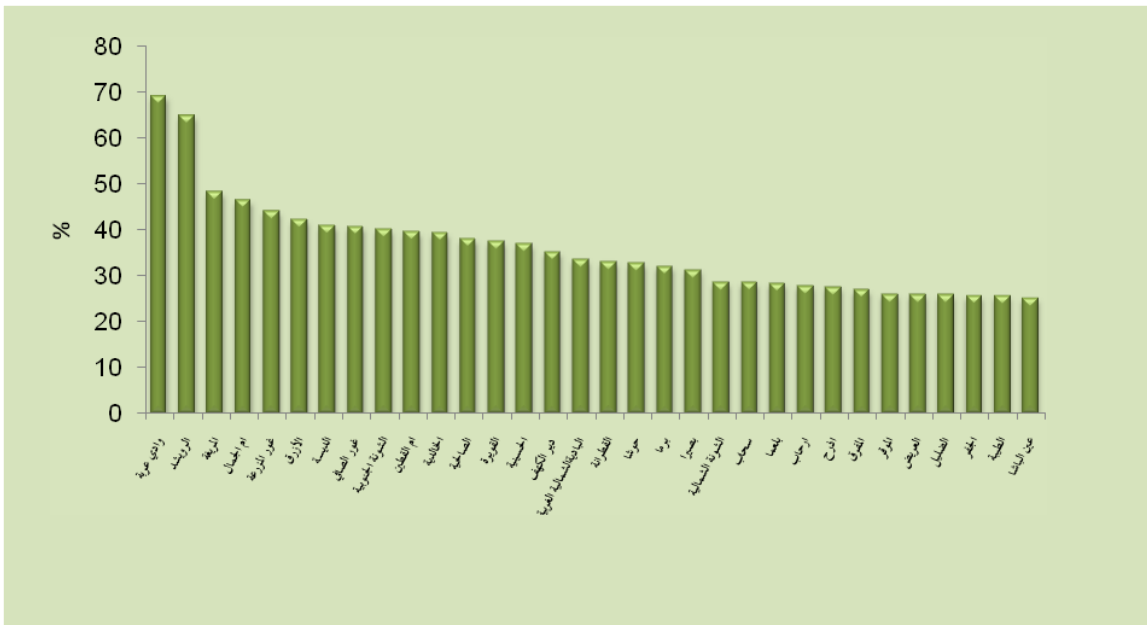
% 0.7 %0.0 (%69.3)

.16% 25
%60

2008 8
32

.(14) %25.2

2008 :7



22 2008 2006
2006 2008 32 2006
18 2008
: 2008 2006
2008 .
2006
.
(%44) 14
. 781 (136) %17.5
.%25 %29
2006 2008
2008-2006
.

2008

:14

2008				
4492	6481	69.3		
3687	5675	65.0		
4027	8326	48.4		
6934	15721	44.1		
1677	4091	41.0		
9570	23472	40.8		
14569	36979	39.4		
6977	18337	38.1		
5223	13888	37.6		
3206	9078	35.3		
9608	28588	33.6		
2343	7064	33.2		
5955	18140	32.8		
3440	10698	32.2		
6265	19943	31.4		
29350	102632	28.6		
7718	27081	28.5		
1285	5003	25.7		
7725	16605	46.5		
5289	12513	42.3		
15083	37514	40.2		
4110	10390	39.6		
3712	10032	37.0		
17523	61369	28.6		
5994	21490	27.9		
1229	4436	27.7		
16563	61235	27.0		
6316	24182	26.1		
1061	4082	26.0		
7440	28671	25.9		
9206	35888	25.7		
35136	139301	25.2		

/ :

2008

()

4 2 3 11

11 7 14

2006 : 15

31.4		27.1	
45.4		26.2	
73.7		29.1	
52.8		44.4	
31.9		36.1	
31.5		35.6	
42.8		34.5	
46.6		62.5	
29.7		28.3	
36.9		26.6	
44.5		36.1	

/ :

:

2008-2006

1.2

1.1.2

2008

2756.6

2006

%38

2685.1

%36.6

2008 2006

%2.6

()

2008

%22.9

613.7

%21.5

2006

592.9

()

2008

%26.6

941.1

%16.7

2008

293.7 ()

2006

%10.3

284.9

%33.3

918.6

(17 16)
(2008 4.2 7.6)

.2006 286.8 %11.4 305.6

257.9 2008 2006 %10.6 291.2

.2006 %11.4

.2006 %0.2 2008 285.6

2008

.(192.8) 344.7

(16) 2006

(294 295.9)

. 266.4

2008

2008 .2006

()

. 240.3 343.2

288.4 2006
. 220.2
2008 2006
.)
(0.84) 2006 305.6
17.2006 2008 336
" " " " " 2006
. 26.9 9.3 0.2
37.9
. 78.6
() 16
)
%31.4 %47 ()
.()

305.6 1.1 2008 17
400) 2008 336.2 2006 2008
.(

2008 2006

:16

2008														
		2008	2006	2008	2006	2008	2006	2008	2006	2008	2006	2008	2006	
3	2	285.6	286.1	286	283.8	286.5	294	291.4	295.9	288.4	286.2	273.5	266.4	
1	1	613.7	592.9	941	918.6	629.6	606	551.2	521	426.5	416.1	293.7	284.9	
12	13	65	60.5	109	89.8	63.7	65.4	53.6	57.6	41.2	39.9	29.7	28.5	
4	5	257.9	291.2	345	374.9	266.4	312.3	244	278.6	210.1	243.8	161.2	181.5	
11	9	107.3	128	145	162.5	114.4	134.4	103	129	79.8	109.1	66	77.3	
8	11	125.5	156.7	188	225.8	133.3	170	113.7	147.4	89.4	113.9	57.6	74.8	
5	4	236	263.7	267	306	239.6	279.8	235.1	259.8	221.8	241	192.8	195.3	
15	14	27.2	36.1	30.1	37.9	27.9	38.1	28.1	39.4	25.1	35	22.2	26.9	
13	12	58	62.7	71	78.6	62.3	68.6	58.3	60.9	49	53	38.2	39.2	
14	15	46.3	46.8	89	88.1	46.5	50.1	34.9	37.4	22.2	21.3	11.3	9.3	
6	7	175.7	194.8	243	306.8	172.5	195.7	161.2	163.6	142	134	115.6	102.8	
9	8	115.2	103.8	157	139.6	117.2	109.8	107.2	94.2	90.4	84.8	75.3	64.8	
7	6	152.7	172.7	202	241	139.8	159.5	140.8	157.1	133.7	141.2	119	125.5	
10	10	112.7	89.7	160	128.5	115.5	95	104	80.4	87.7	69.5	63.3	47.3	
16	16	0.7	0.8	2.5	2.7	0	0.1	0	0	0.1	0	0	0.2	
2	3	305.6	269.9	304	278.8	326.2	288.4	343.2	275.9	297.3	269.2	240.3	220.2	
		2685	2756.4	3539	3664	2741.3	2867	2570	2598.1	2204.6	2258	1759.6	1745	
		38	36.6	31.4	29.8	40	39.3	43.5	42.2	45.5	44.3	47.1	45.3	%

			2008	
		2006	%62	4372.1
			%63.4	4765.0
1316.8		2006	2006 2008	
	1196.6	2006	%10	2008
2008	921			
		860.8	2006	%7.1
	395		2006	
	529.1	2006	%25.4	
%1.5		2008	335.8	
			.(17) 2006
	2008			
()			
			749.1	
	205.6			254.2
)		168.1	
			.(

2008													
		2008		2006		2008		2006		2008		2006	
		2008	2006	2008	2006	2008	2006	2008	2006	2008	2006	2008	2006
1	1	1317	1196.6	2185.6	1933.7	1197.1	1112.3	1036	962.2	907.7	843.3	749.1	701.5
2	2	921.2	860.8	1770.1	1873.5	929.6	738.7	668.8	514.7	435	364.8	254.2	232.1
3	6	394.7	529.1	886.2	1107.6	338.3	506.6	225.7	344.2	144.1	222.5	91.6	112.2
4	5	335.8	330.8	604.6	580.8	310.6	332.8	260.5	260.5	200.4	193.3	138.2	126.9
5	3	270.2	456	367.6	642	253.8	418.3	240.4	403.2	227.1	373	205.6	339.9
6	4	228.6	229.3	302	328	224.6	225.5	211.6	204.9	189.9	181	168.1	144.8
7	9	151.2	204.5	325.4	429.9	123.7	172.4	89.9	134.9	68.5	92.5	49.7	64.5
8	15	126.5	104.3	341.6	275.9	78.9	75.9	45.9	41.9	32.5	20.6	18.2	13.4
9	7	105.9	116.9	133.6	153	109.4	124.9	101.9	109.6	89.7	97.3	74.4	72.6
10	13	92.7	140.8	168	310.1	112.9	123.2	65.7	88.7	39.4	57.8	22.6	24.5
11	10	90.1	116.5	139.2	187	93.1	121.9	82	98.6	61.7	76.1	39.6	51.4
12	12	76.7	92.6	124.4	155.1	78.9	99.7	67.1	74.8	50.2	54.6	29.8	36.4
13	16	73.9	119.7	166.8	273.8	58.2	95.8	44.6	73.9	33.5	44.3	12.6	23.3
14	11	67.4	77.1	90.7	102.7	69.7	80.4	65.6	73.3	54.6	63.2	38.9	47.5
15	8	62.1	81.5	47.1	75.8	60.3	82.4	72.3	88	73.5	86.7	65.6	76.2
16	14	51.2	74.1	77.3	133.5	52.9	74.3	53.5	60.3	34	41.8	18.3	22.2
17	17	22.3	29.5	28.6	41.1	24	32.3	22.8	28.4	17.8	22	12.6	14.3
18	18	2.6	4.9	3.9	9.2	2.8	4.8	2.7	3.9	1.8	1.9	0.9	2
		5.7	5.8	4.2	4.3	5.1	5.3	6	6.1	6.6	6.7	7.6	7.6
		4372	4765	7735.6	8612.9	4105.9	4422.4	3341	3565.8	2645.8	2836.7	1977.2	2105.6
		7057	7521.3	11274.1	12276.4	6847.2	7289.4	5911	6164	4850.4	5094.7	3736.8	3850.6

	0.9		
		.(12.6)	(12.6)
	(28.6)		(3.9)
		2006	.2008
	(13.4)		(47.1)
			(2.0)
			(14.3)
75.8)		(41.1)	(9.2)
			(17) .(
2006			17 16
			2008
		.2006	2008
			.
18		2008	
%8.7			
		%3.7 %4	
			2006
	.(%3.8)	(%3.9)	%7.9
		2008	
(%7.3)		%7.9	

	.%6.4	()	
		2006	()
			(%6.9)		(%7.4)
	(%7.5)				.%5.7
					.(%3.1)
	2008				
2008				2006	.
				.	2006

(%) 2008 2006

:18

2008	2006	2008	2006	2008	2006	2008	2006	2008	2006	2008	2006	
4.0	3.8	2.5	2.3	4.2	4.0	4.9	4.8	5.9	5.6	7.3	6.9	
8.7	7.9	8.3	7.5	9.2	8.3	9.3	8.5	8.8	8.2	7.9	7.4	
0.9	0.8	1	0.7	0.9	0.9	0.9	0.9	0.8	0.8	0.8	0.7	
3.7	3.9	3.1	3.1	3.9	4.3	4.1	4.5	4.3	4.8	4.3	4.7	
1.5	1.7	1.3	1.3	1.7	1.8	1.7	2.1	1.6	2.1	1.8	2	
1.8	2.1	1.7	1.8	1.9	2.3	1.9	2.4	1.8	2.2	1.5	1.9	
3.3	3.5	2.4	2.5	3.5	3.8	4	4.2	4.6	4.7	5.2	5.1	
0.4	0.5	0.3	0.3	0.4	0.5	0.5	0.6	0.5	0.7	0.6	0.7	
0.8	0.8	0.6	0.6	0.9	0.9	1.0	1.0	1.0	1.0	1.0	1.0	
0.7	0.6	0.8	0.7	0.7	0.7	0.6	0.6	0.5	0.4	0.3	0.2	
2.5	2.6	2.2	2.5	2.5	2.7	2.7	2.7	2.9	2.6	3.1	2.7	
1.6	1.4	1.4	1.1	1.7	1.5	1.8	1.5	1.9	1.7	2	1.7	
2.2	2.3	1.8	2	2	2.2	2.4	2.5	2.8	2.8	3.2	3.3	
1.6	1.2	1.4	1	1.7	1.3	1.8	1.3	1.8	1.4	1.7	1.2	
0.0	0.0	0.0	0.0	0.0	0.0	0.0	0.0	0.0	0.0	0.0	0.0	
4.3	3.6	2.7	2.3	4.8	4	5.8	4.5	6.1	5.3	6.4	5.7	
38.0	36.6	31.4	29.8	40.0	39.3	43.5	42.2	45.5	44.3	47.1	45.3	

%18.7

%13.1

2008

19

2006

.(%11.4)

(%15.9)

2008

%6.8

19.4% %20

. %15.7

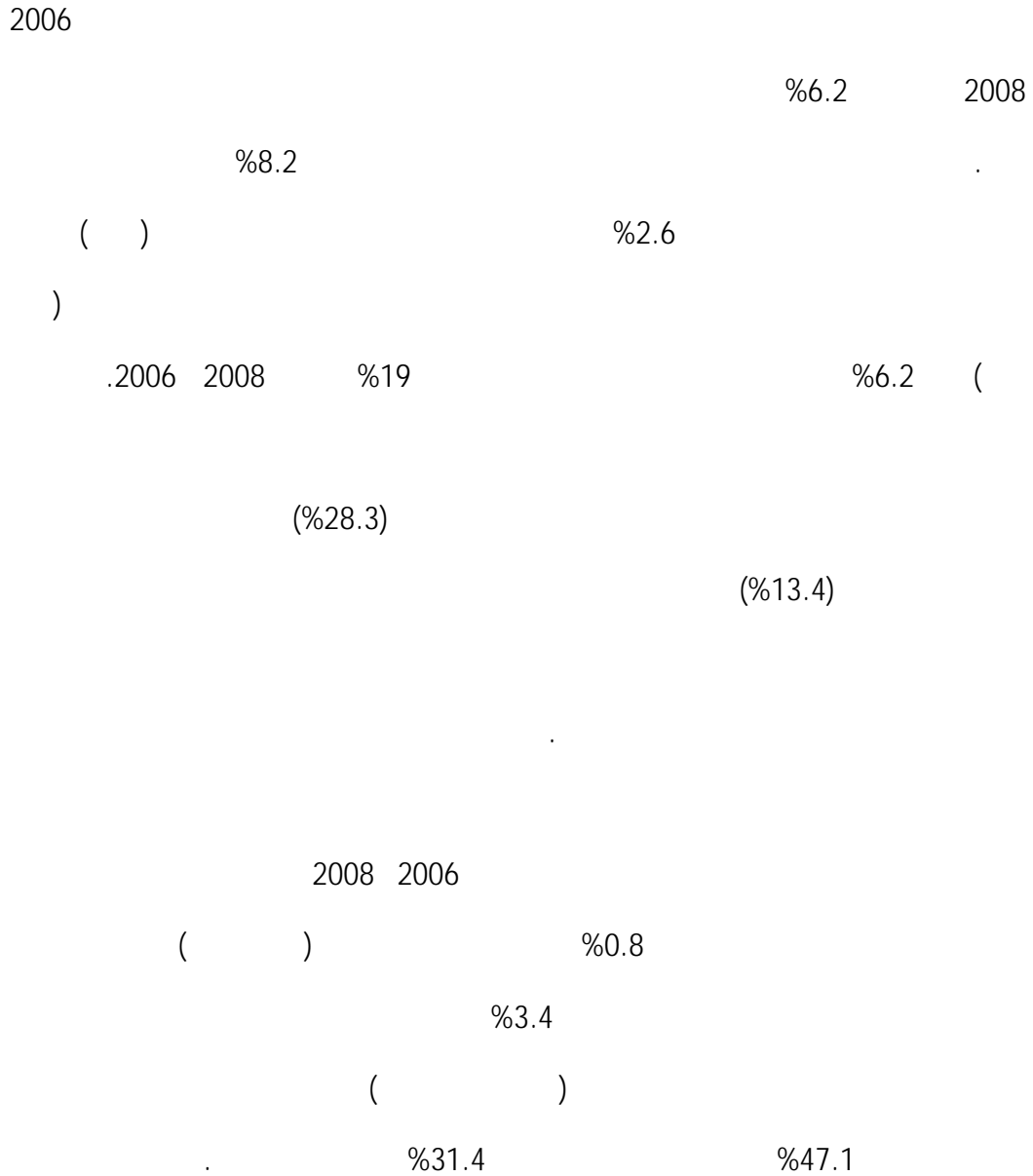
(%) 2008

:19

2008	2006	2008	2006	2008	2006	2008	2006	2008	2006	2008	2006	
1.1	1.2	1.1	1.3	1.2	1.4	1.1	1.2	1	1.1	0.8	0.9	
1.3	1.5	1.2	1.5	1.4	1.7	1.4	1.6	1.3	1.5	1.1	1.3	
0.9	1.1	0.4	0.6	0.9	1.1	1.2	1.4	1.5	1.7	1.8	2	
0	0.1	0	0.1	0	0.1	0	0.1	0	0	0	0.1	
1	1	0.8	0.8	1	1.1	1.1	1.2	1.1	1.2	1	1.2	
18.7	15.9	19.4	15.8	17.5	15.3	17.5	15.6	18.7	16.6	20	18.2	
3.8	6.1	3.3	5.2	3.7	5.7	4.1	6.5	4.7	7.3	5.5	8.8	
1.3	1.9	1.5	2.5	1.6	1.7	1.1	1.4	0.8	1.1	0.6	0.6	
0.7	1	0.7	1.1	0.8	1	0.9	1	0.7	0.8	0.5	0.6	
0.3	0.4	0.3	0.3	0.4	0.4	0.4	0.5	0.4	0.4	0.3	0.4	
1.5	1.6	1.2	1.2	1.6	1.7	1.7	1.8	1.8	1.9	2	1.9	
13.1	11.4	15.7	15.3	13.6	10.1	11.3	8.4	9	7.2	6.8	6	
4.8	4.4	5.4	4.7	4.5	4.6	4.4	4.2	4.1	3.8	3.7	3.3	
5.6	7	7.9	9	4.9	7	3.8	5.6	3	4.4	2.5	2.9	
2.1	2.7	2.9	3.5	1.8	2.4	1.5	2.2	1.4	1.8	1.3	1.7	
3.2	3	2.7	2.7	3.3	3.1	3.6	3.3	3.9	3.6	4.5	3.8	
1	1.6	1.5	2.2	0.8	1.3	0.8	1.2	0.7	0.9	0.3	0.6	
1.8	1.4	3	2.2	1.2	1	0.8	0.7	0.7	0.4	0.5	0.3	
61.9	63.4	68.7	70.2	60	60.7	56.5	57.8	54.5	55.7	52.9	54.7	
100	100	100	100	100	100	100	100	100	100	100	100	

/ :

هـ. معدلات النمو في الإنفاق الكلي بين عامي 2006 و2008



. ()

)

(

2008 %67

%53

¹⁸(%) 2008 2006

:20

-6.2	-8.2	-6.1	-4.1	-4.8	-3.0	
-2.6	-3.4	-4.4	-1.1	-2.4	0.8	
-8.2	-10.2	-7.2	-6.3	-6.7	-6.1	

/ :

20

2008

2006 2008 – 2006 2.1.2

5.7

2008

(514) 6166

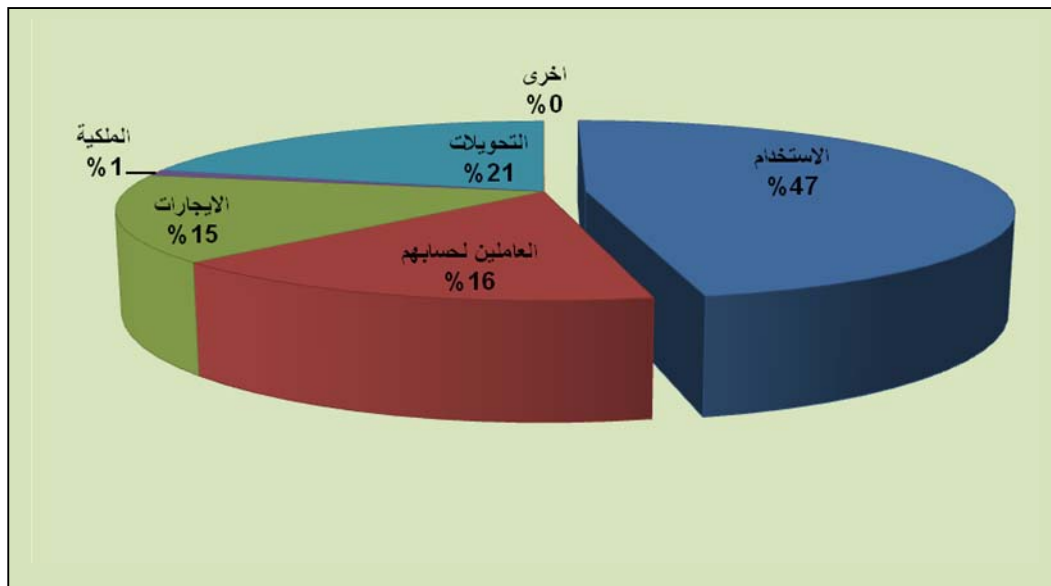
.(90) 1081

.2008

9

2008

:8



2008 2006

%8.2

%2.1

%26.9

%4.9

6166 2006

6220

%.9

1084

(514 518) 2008

.2008

1081 2006

(100=2006) 2008

:21

2879.0	4526.4	3220.9	2588.6	1947.9	1145.3	
980.0	2438.9	722.0	487.5	360.2	233.6	
962.0	2007.9	837.1	650.0	506.4	312.2	
63.8	201.7	25.8	22.1	8.5	1.6	
1281.7	2008.2	1350.2	1088.4	904.4	665.5	
0	0	0	0	0	0	
6166.4	11183.1	6156.0	4836.7	3727.5	2358.2	

/ :

2006

:22

2820.2	4600.3	3082.4	2387.8	1885.6	1084.4	
905.8	1941.3	807.6	572.3	411.8	279.0	
1057.3	2233.4	894.8	681.7	528.4	373.3	
87.3	276.7	36.4	22.6	12.4	4.1	
1347.9	2157.1	1375.8	1051.1	895.2	836.0	
0.0	0.0	0.0	0.0	0.0	0.0	
6219.7	11212.8	6197.5	4715.5	3733.8	2576.8	

/ :

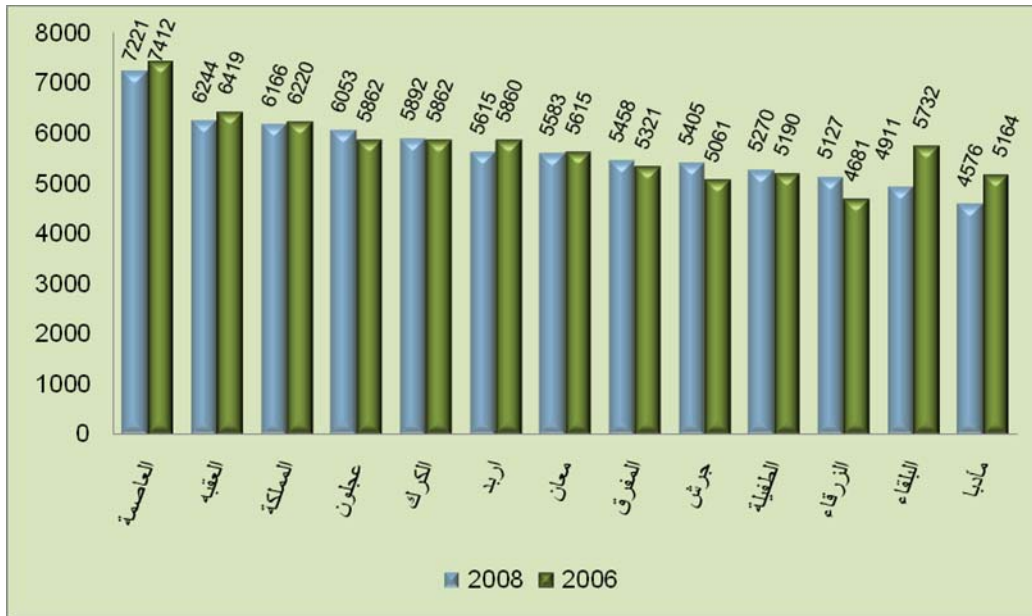
(100=2006) 2008

:23

2.1	-1.6	4.5	8.4	3.3	5.6	
8.2	25.6	-10.6	-14.8	-12.5	-16.3	
-9.0	-10.1	-6.4	-4.6	-4.2	-16.4	
-26.9	-27.1	-29.0	-1.9	-31.2	-61.2	
-4.9	-6.9	-1.9	3.5	1.0	-20.4	
0	0	0	0	0	0	
-0.9	-0.3	-0.7	2.6	-0.2	-8.5	

/ :

2008 2006 : 9



2008 2006

6244

7221

2008

4911

4576

.2008

6166

2008 2006

% 1.6

%2.6

%3.3

%6.8

%9.5

.%0.5

%2.7

%4.2

%11.4

%14.3

.%0.6

%0.9

2008

:10



() () 11

()

.%28

%49

%0.1

%13

%10

8

.()

%40.5

%18

%21.8

.%2

%18

2008 2006

:11



2008 2006

() %8.5

()

2358.2

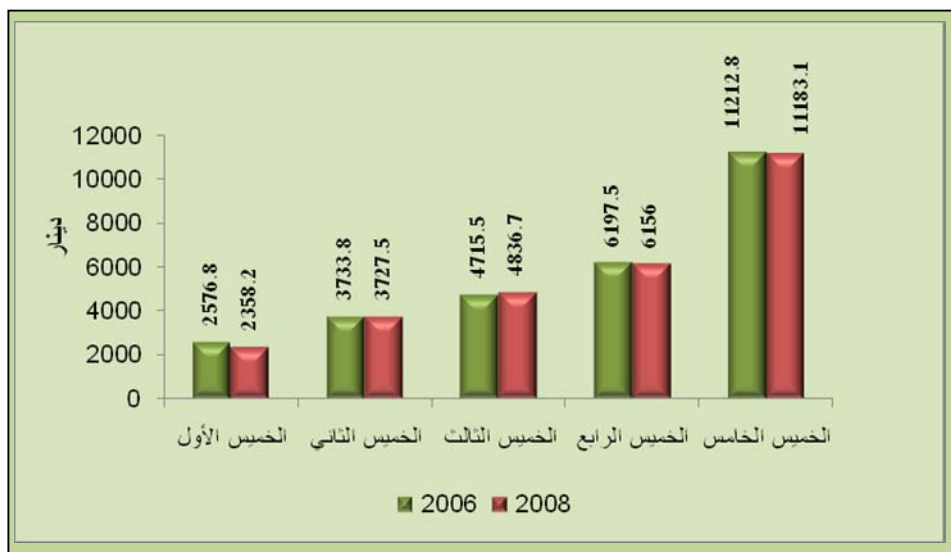
()

11183 %0.3 ()

.(13) %0.9

2008 2006

:12



2008 %48 ()
 () 2006 %42
 %40 ()
 %46.6 2006 %45.3 .2006 2008
 .2008
 2008 1145.3 ()
 .2006 %5.6
 %1.6 2008 4526.4 ()
 .%2.1 2006

2008 2006 :13



2008 2006

:14



%9.9 ()

2006 %10.8

2008

()

)

2006 %17.3 2008 %21.8 ()

2008 %15.9 2006 %14.6

()

2006 16.3% 2008 233
 1941 ()

25.6% 2008

8.2%

2008 2006 :15



20

13.2% ()

2006 13.9% 2008

17.9% 2008 2006

2006 19.9%

2008 15.6% 2006 16.9%

2008 312 ()

() 2006 16.4%

9.0% 10.1% 2008 2007.9

2008 2006

²⁰ الإيجارات: دخول الأسر من إيجارات المباني السكنية وغير السكنية والقيمة التقديرية لإيجار المسكن المملوك.



21

()

2008 2006

%0.1 %0.3

%2.2 %2.6 ()

%1.1 %1.4 2008 2006

2008 2006

2008 1.6 ()

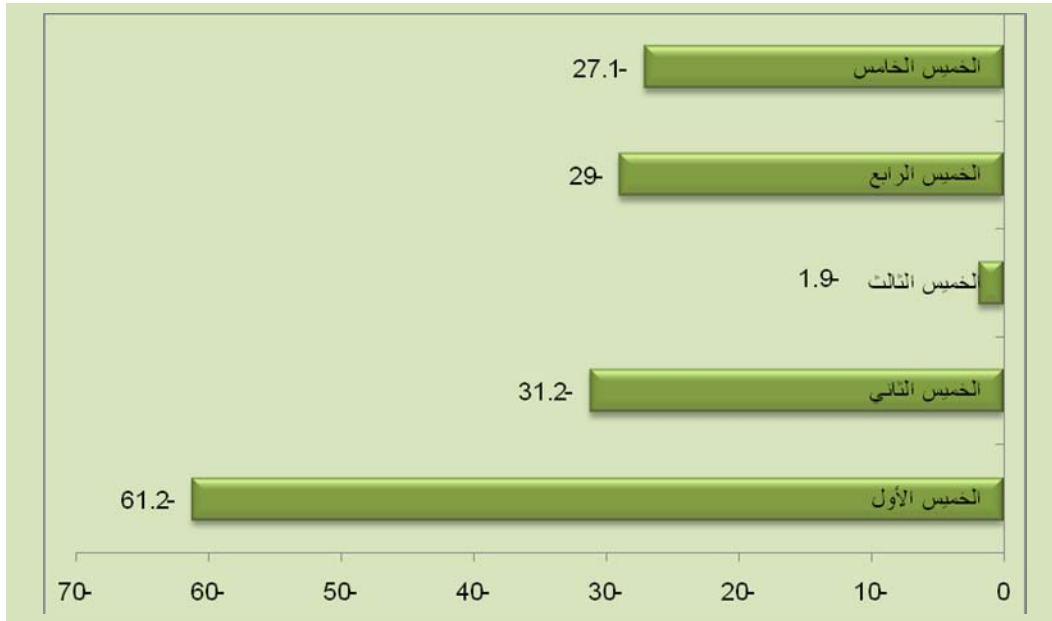
() 2008 201.7 2006 %61.2

.2006 %27.1

.%26.9 2008 2006

2008 2006

:17



22

.()

%28.2 ()

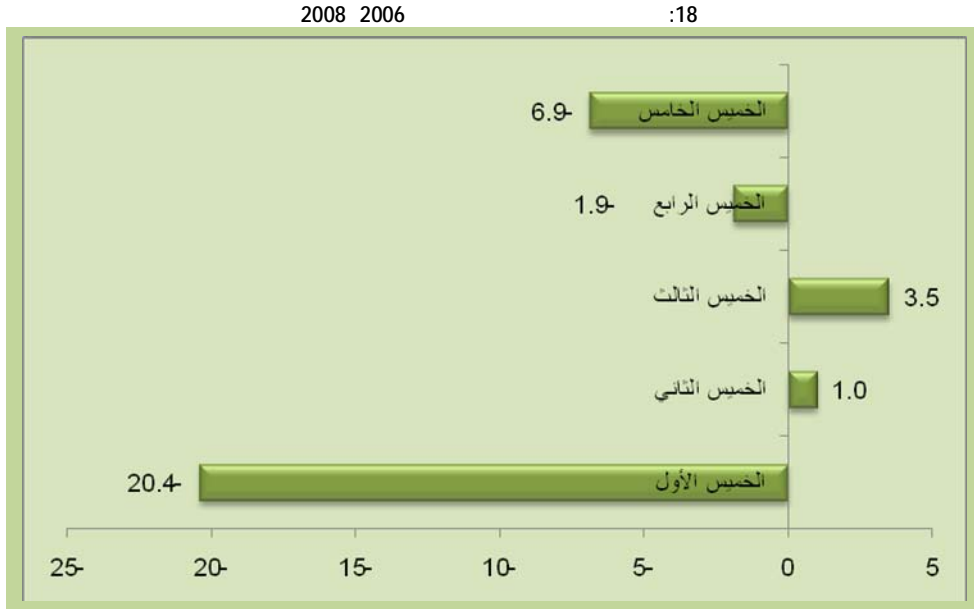
.2006 %32.5 2008

.2006 %19.2 2008 %17.9 ()

.2006 21.7 2008 % 20.8

_____ :²²
()

2008 665 ()
 () .2006 %20.4
 .%6.9 2008 2157.1
 .2006 %4.9 2008 1281.7



350 (24)
 1000 350 %9.1
 %1.5 %35.1 %53.9
) %0.2 10000
 %98 4000 350 .(

2008	:24		
%			
9.1	350	0	1
53.9	1000	- 350	2
35.1	4000	- 1000	3
1.5	10000	- 4000	4
0.2	15000	- 10000	5
0.2	15000		6

/ :

890.7

2008

.%87.4

(20)

%82

%87

%93

%100

.20

2008

:19



3.1.2

()

()

2008

1991

.2007

%4.7

%13.9

2008

2008

.24

2009

2008

2008

.%19

2007 2006

:

%28.3 2008 2006

" %65.5 "

" %37.8 "

" %49.9 "

" %57.2 "

" %25.6 "

" %29.1 "

" %37.6 "

%42

.%15 "

2008 2006

%13.4

:

United Nations, World Economic Situation and Prospects 2009, pp.44-54.
2008

.23

.24

(%53)

(%47)

.20-17

2008

:

%14.1

%51.6

.%20.3

21

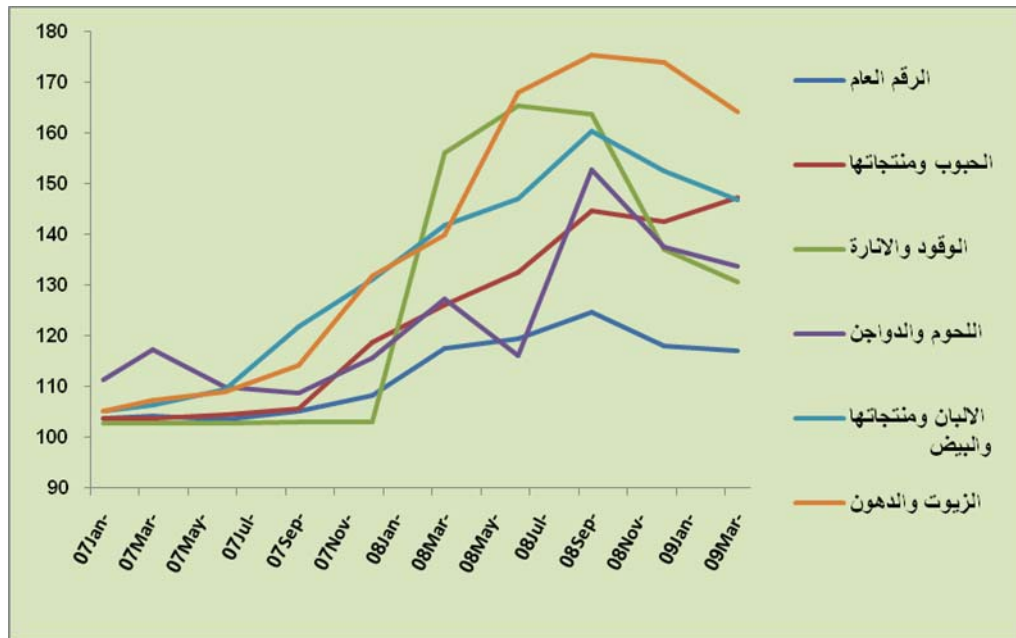
2008

(2008)

.2009 2008

2008

: 20



:

2008 2006

2006

2008

)

(

%4.8 ()

%3

%8.2

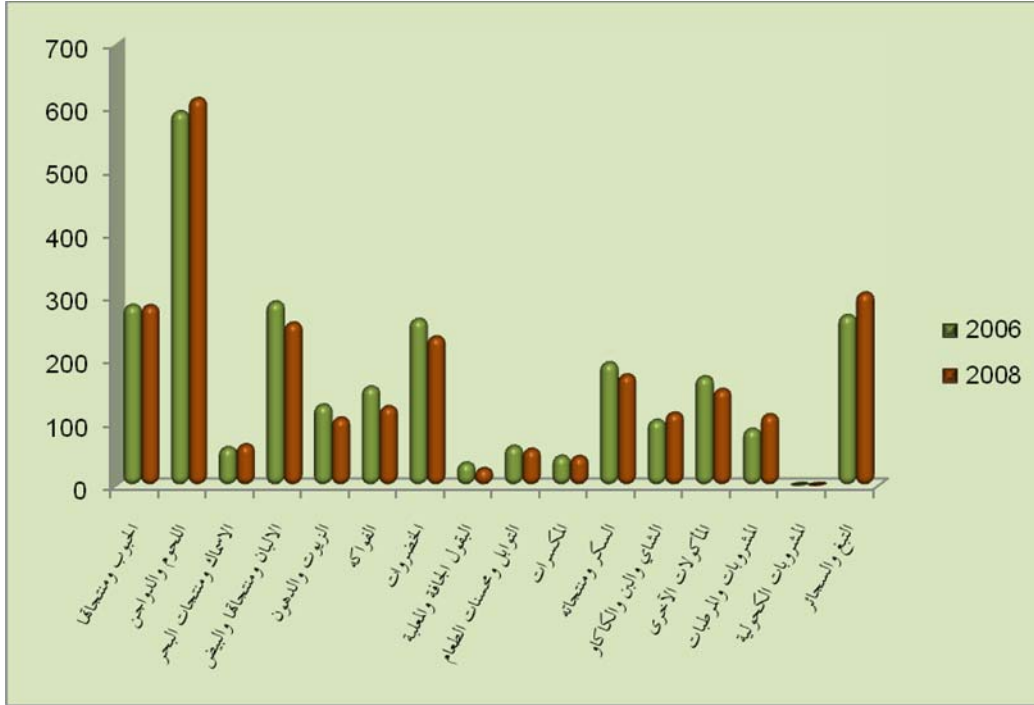
%6.1

%4.1

6.2

2008 2006

:21



%0.8

%10.9

%13.2

()

%16.2

%9.1

()



) ()

. %6.9 %10

(

%55 %8

%5.8

%6.8

)

.%2.5

%16.2

(

)

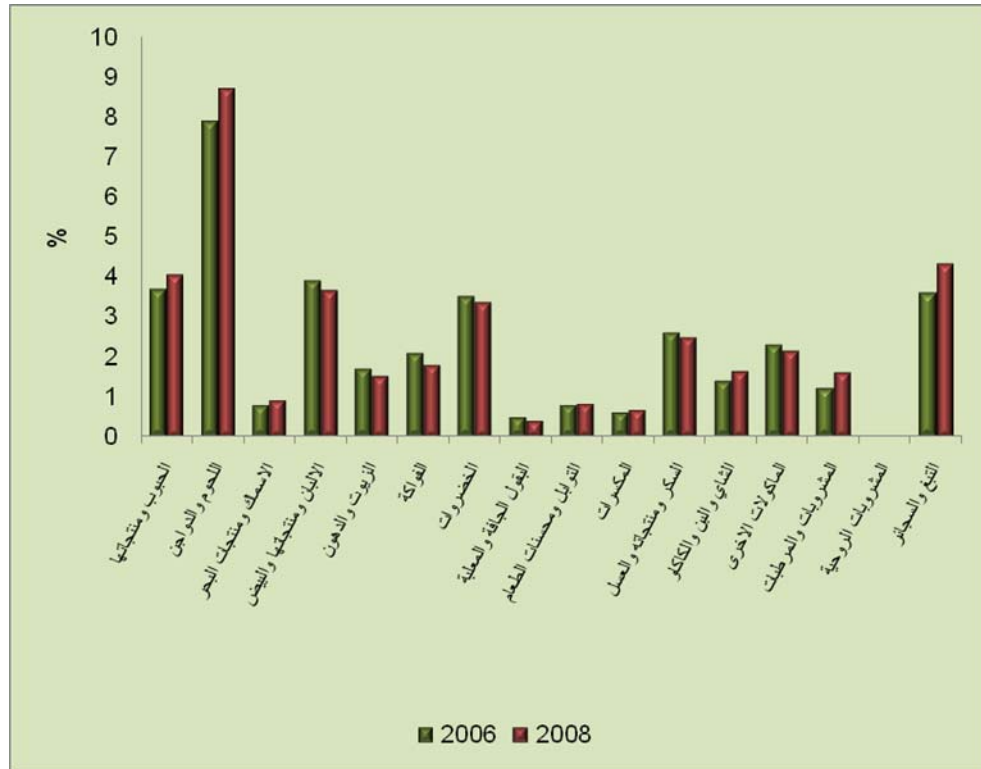
(

%13

%57.5 %4.4

()

شكل 22: الأهمية النسبية لإنفاق الأسرة على المجموعات الغذائية للعامين 2006 و2008



()

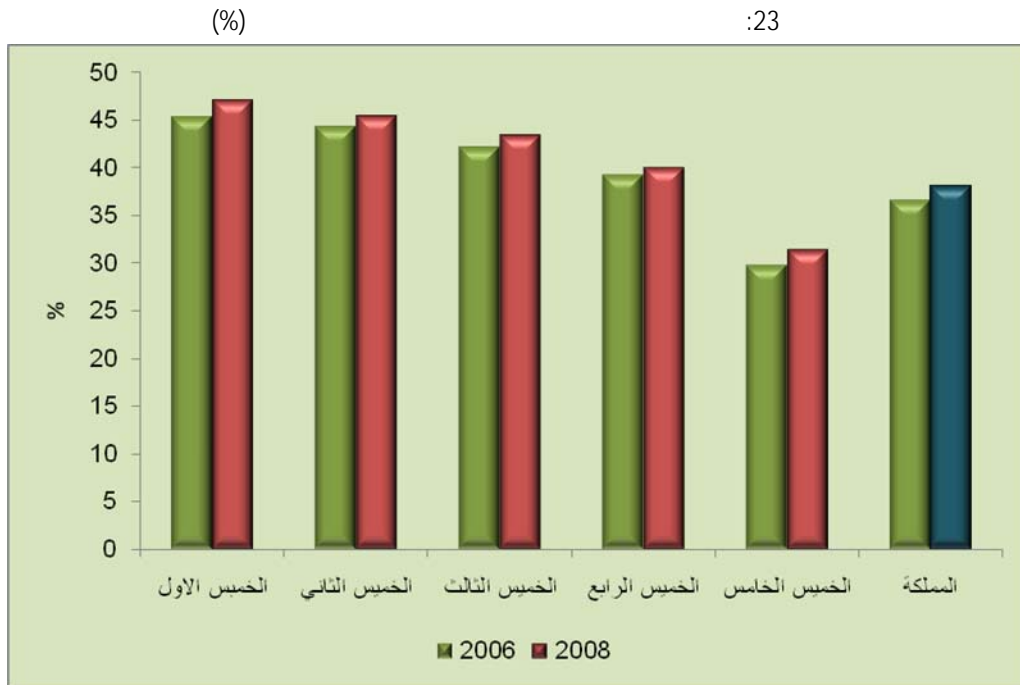
:

1.8

2008 2006

1.3 ()
() 1.2 ()
1.6 0.7

(70 12)



(%)

:24



()

•

2008 %29.8

%20

2006 %28.5

%18.2

2008

%10.2

2006

%9.3

4.1.2

25

:25

100	50.6	49.4	
100	49.3	50.7	
100	48.7	51.3	
100	48.5	51.5	
100	51.4	48.6	

/ :

26

%7.3 %15.5

5.2 4

%3.7

%14.2

)

%20

(15

:26

%	+60	59-25	24-15	14-5	4-0	
100	3.7	29.1	19.2	32.5	15.5	
100	3.9	32.4	20.1	28.4	15.2	
100	4.5	33.7	23.6	24.3	13.8	
100	7.0	37.0	24.3	19.8	11.9	
100	14.2	41.5	24.3	12.8	7.3	
100	6.7	34.7	22.3	23.6	12.7	

/ :

.()

:27

100	5.2	0.5	93.9	0.3	
100	6.6	0.4	92.7	0.3	
100	8.0	0.5	90.6	0.8	
100	10.1	0.4	87.7	1.8	
100	13.5	1.1	81.9	3.5	

/ :

2008

:28

82.5	88.3	90.2	92.3	93.1	
17.5	11.7	9.8	7.7	6.9	

/ :

%11.5

%88.5

%92.3

()

%93.1

%88.3 %90.2

%17.5 %82.5

)

2008

%57.6

(

29

29

(15) :29

%						
100.0	6.0	12.9	0.4	23.1	57.6	
100	5.8	10.9	0.7	23.9	58.8	
100	6.3	14.9	0.1	22.3	56.5	
100	11.3	17.3	0.3	23.7	47.4	
100	10.6	16.6	0.6	26.0	46.1	
100	12.0	17.9	0.0	21.4	48.7	
100	14.7	19.7	0.5	24.3	40.9	
100	14.8	18.4	0.9	26.6	39.4	
100	14.6	21.0	0.0	21.8	42.6	
100	20.7	21.2	0.3	21.3	36.6	
100	19.9	21.4	0.5	23.9	34.3	
100	21.4	20.9	0.1	16.6	39.0	
100	33.7	22.5	0.3	12.6	30.8	
100	36.3	22.9	0.7	16.0	24.1	
100	31.4	22.1	0.0	9.5	36.9	
100	18.8	19.2	0.3	20.4	41.3	
100	19.0	18.6	0.7	22.9	38.8	
100	18.6	19.7	0.0	17.9	43.7	

/ :

7.6

4.2

5.7

4.2

جدول 30 : متوسط حجم الأسرة وخميسات الإنفاق

7.6	
6.6	
6.0	
5.1	
4.2	
5.7	

/ :

(%72.7)

.%27.3

.%85 ()

(%0.8 %8.4)

:30

100	27.3	7.4	0.8	64.5	
100	20.2	8.6	2.3	68.8	
100	19.1	7.9	3.1	70.0	
100	18.5	8.8	4.7	68.0	
100	15.2	5.9	8.4	70.5	
100	20.1	7.7	3.9	68.4	

/ :

. %9.2 %14.9

.%89.7

. %6.3

.%27

()

.33 32

:31

100	78.8	14.9	6.3	
100	83.1	13.8	3.0	
100	82.2	15.6	2.2	
100	85.2	13.3	1.5	
100	89.7	9.2	1.1	
100	83.8	13.4	2.8	

/ :

%34.1

.%72.5

:32

100	0.1	0.2	65.6	34.1	
100	-	0.6	65.0	34.4	
100	-	0.5	64.6	34.9	
100	0.0	0.6	64.5	34.8	
100	0.8	0.7	72.5	25.9	

/ :

34

%14.5

%15.4

()

%15

%8.8

%4

2008

:33

3.9	4.9	14.5	15.4	
0.0	19.6	18.6	20.1	
0.0	19.3	19.8	21.9	
4.7	25.1	21.9	24.2	
91.3	31.1	25.2	18.4	
100	100	100	100	

/ :

%53

2008

)

.%79.4

(

:34

%				
100	47.4	52.6	0.0	
100	58.7	41.3	0.0	
100	64.0	35.9	0.0	
100	70.6	29.2	0.2	
100	79.4	17.4	3.2	
100	66.2	32.9	0.9	

/ :

%63.5

%10

:35

%					
100	10.7	0.7	25.1	63.5	
100	8.1	1.0	25.9	64.9	
100	8.4	1.6	23.5	66.5	
100	6.8	1.6	21.0	70.7	
100	4.4	0.7	18.8	76.1	
100	7.3	1.1	22.3	69.3	

/ :

()

%47.7 /

.%19.1

() .%3.3

%17.2 / %31 %44.1

%62.9 /

%43.2

:36

		/				/		
3.0	1.2	7.6	0.3	0.1	14.7	73.1	2006	
3.1	0.1	19.1	3.1	0.0	26.7	47.7	2008	
1.3	1.5	3.2	0.6	0.2	19.9	73.3	2006	
1.3	0.3	11.5	3.3	0.2	31.7	51.7	2008	
1.6	0.9	2.2	0.4	0.8	23.5	70.7	2006	
1.0	0.3	9.4	4.1	0.2	38.0	47.0	2008	
1.0	0.7	1.8	0.9	2.3	28.9	64.4	2006	
1.1	0.4	5.9	5.2	0.8	41.2	45.4	2008	
0.2	0.2	0.8	0.9	21.9	31.7	43.8	2006	
0.4	0.2	1.6	5.5	17.2	44.1	31.0	2008	
1.4	0.8	2.7	0.7	6.6	24.9	62.9	2006	
1.2	0.3	8.3	4.4	4.9	37.6	43.2	2008	

/ :

.2008

%73.1 ()

%14.7

2006 /

2006 %7.6

2008 %27 2006

.2008 %19.1

2008

()

%11.5 %63.9

%14.7 %53.9

38

%69.4 %34.5 %32

.()

%85.5

2008

:37

17.0	28.3	17.4	15.5	8.9	6.9	
97.5	98.6	97.6	98.6	96.8	94.7	
97.4	99.1	98.4	98.2	96.7	92.8	
9.4	22.4	7.4	5.1	2.6	1.8	/
63.1	85.5	70.3	60.5	48.8	31.9	
30.2	24.0	28.9	33.6	34.2	34.5	
39.8	18.0	33.7	42.3	53.3	69.4	
23.9	51.1	23.3	14.8	9.9	3.3	
1.3	3.3	0.7	0.3	0.7	0.2	
56.7	81.0	63.6	54.8	41.4	22.4	
98.8	99.6	99.2	99.2	98.8	96.3	
91.1	95.7	92.9	92.0	88.6	81.9	+ ()
39.0	55.5	41.4	34.2	30.4	21.9	
20.6	38.0	18.8	17.1	12.3	5.8	dvd / cd/
3.8	10.1	2.4	1.6	1.1	0.4	
36.7	53.9	39.8	34.5	27.5	14.7	
7.8	21.0	5.3	3.4	1.5	0.5	
34.3	63.0	34.6	26.0	17.6	11.9	
93.8	94.6	94.3	96.1	93.8	88.6	
7.9	17.1	6.3	5.6	3.4	1.7	
9.9	17.5	10.6	8.1	5.0	3.2	
10.7	12.8	11.1	10.6	9.0	8.4	
39.4	63.9	44.2	34.8	24.0	11.5	

/ :

:

%33.7

%48

15

جدول 39 : التوزيع النسبي للسكان حسب شريحة الفقر والفئة العمرية 2008

	+60	59-25	24-15	14-5	4-0	
100	3.7	29.1	19.2	32.4	15.6	
100	7.3	36.0	23.0	21.4	12.3	
100	6.6	34.6	22.3	23.6	12.9	

/ :

) (%58)

(%38

%6

(%21)

2008 : 38

100.0	6.0	12.9	0.4	23.1	57.6	
100.0	21.3	20.4	0.3	19.9	38.1	
100.0	18.8	19.2	0.3	20.4	41.3	

/ :

(%87 %93.9)

%5.3 % 10.3

2008 :39

100.0	5.3	0.4	93.9	0.4	
100.0	10.3	0.7	87.1	1.9	
100.0	9.3	0.6	88.5	1.6	

/ :

(% 5.2 %1.2)

%18 %25.2

2008

: 40

100.0	25.2	7.8	1.2	65.7	
100.0	18.0	6.9	5.2	69.8	
100.0	19.4	7.1	4.5	69.0	

/ :

15

%13

%87

2008

: 41

13.2	
86.8	
100	

/ :

25

:



:

2008

2008

:

.2008

:

:

.2008

:

:

1.3

2008

2008

:

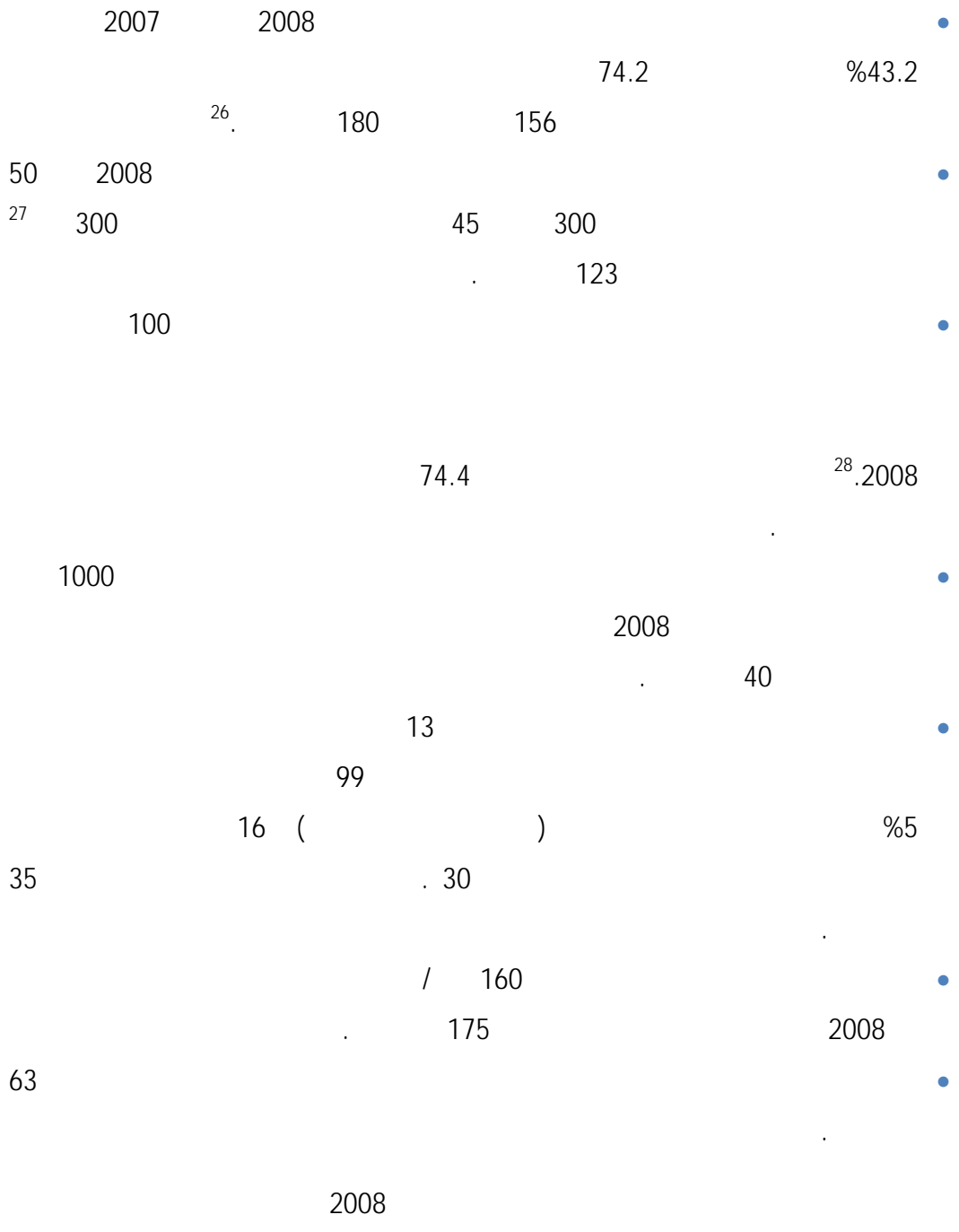
2008

2006

82



:²⁵



Year	Value	Percentage
2008	21	
2008	25	
2008	56	

74.2

:

:

26

()

%2.9

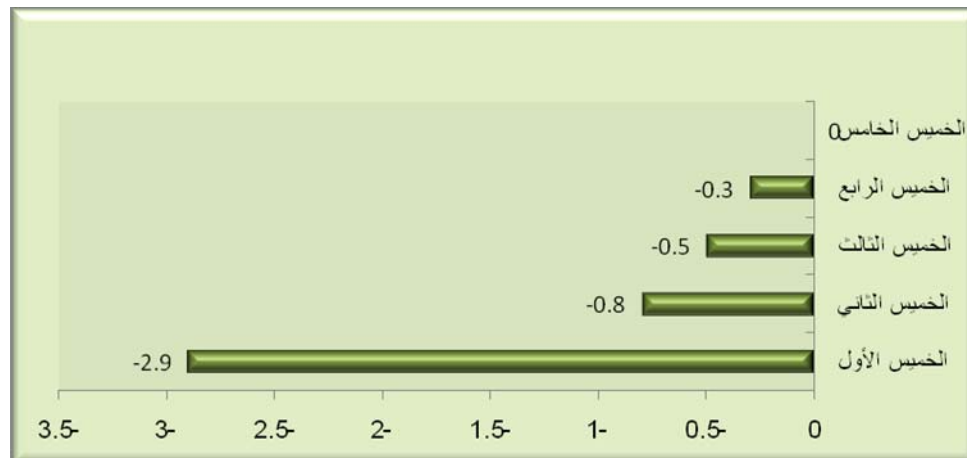
%0.5

%0.8

%0.3

2008

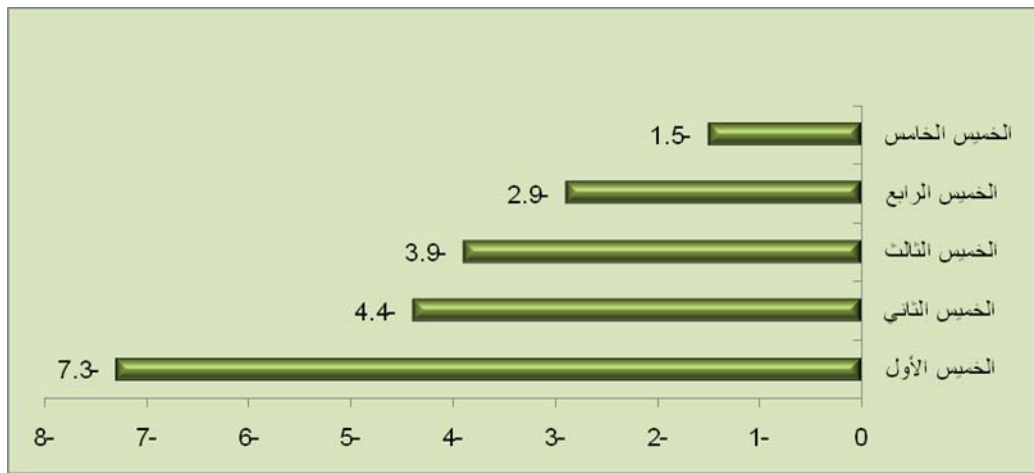
:25



2008 2008
 183.3 100
 200 2008
 %13.3 %13.9

.27

:26



()

()

%2.9

%7.3

44

2008

: 42

-1.5	-2.9	-3.9	-4.4	-7.3	%(2)
0.0	-0.3	-0.5	-0.8	-2.9	%(1)

/ :

.2008 %13.3

%16.4

:

186

/

()

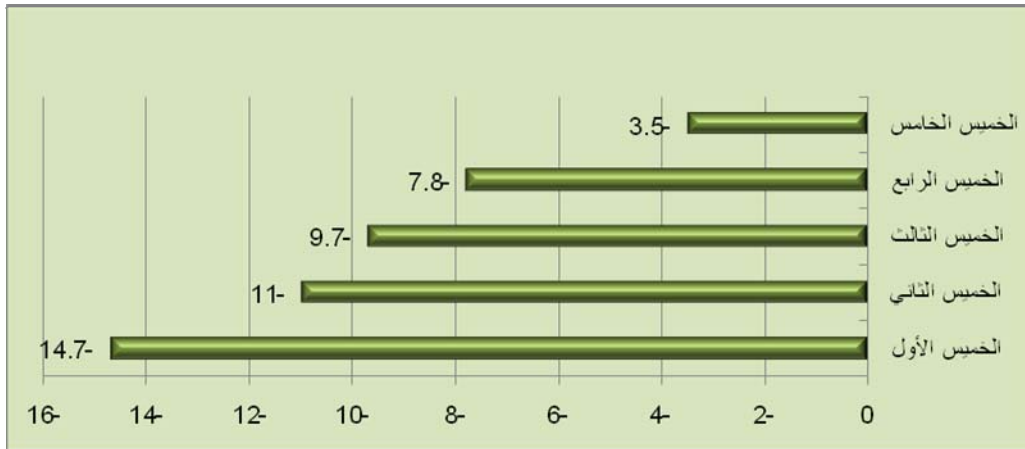
%14.7

%3.5 %7.8 %9.7 %11

(%)

2008

:27



) 2008

.(

29

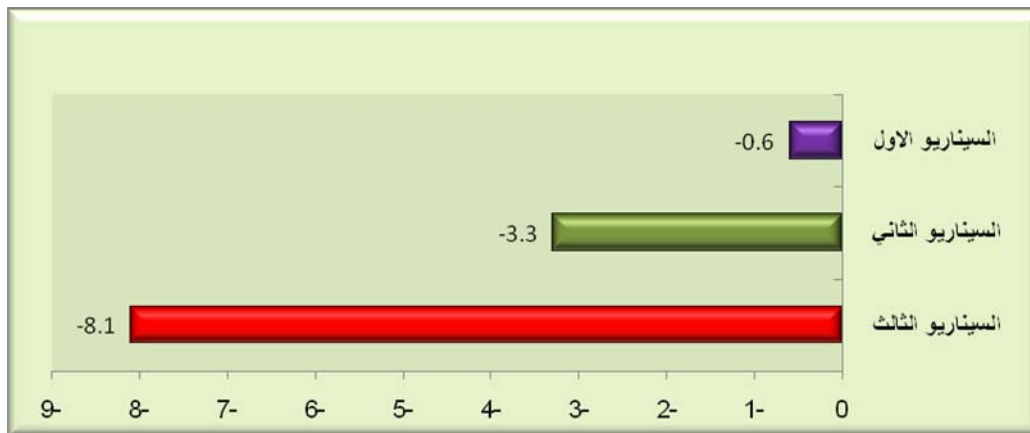
2008

()

.%8.1

2008

:28

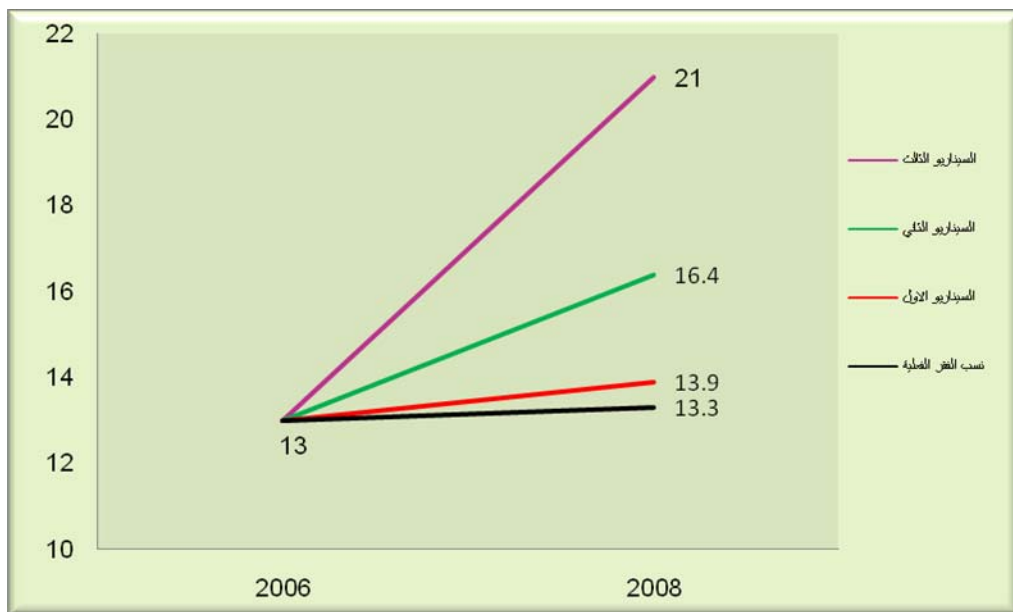


45 .%13.3 2008 2008 %21.0
 30

: 43

(%)	(%)	()		
13.3	13.9	74.2		
	16.4	183	+	
	21.0	307	+	+
/ :				

2008 2008 2006 : 29



: 44

1000/	100/				
			100		1
3480	348		101		
3580	358		102		
3620	362		103		
3380	338		104		
3640	364		105		
3440	344		106		
2990	299		107		
2810	281		108		
2490	249		109		
3540	354		110		
3660	366		111		
3620	362		112		
3620	362		113	/	
3670	367		114		
3670	367		115		
90	457		116		
96	480		117		
2400	480		118		
3420	342		119		
364	364		120		
3560	356		121		
			122		
			123		
			200		2
2670	267		201		
1230	123		202		
2400	240		203		
2670	267		204		
2250	225		205		
1930	193		206		
2670	267		207		
2400	240		208		
2030	203		209		
3150	315		210		
2330	233		211		
2330	233		212		

1490	149		213		
1220	122		214		
1200	120		215		
1300	130		216		
			217		
			300		
					3
1490	149		301		
2250	225		302		
2250	225		303		
2380	238		304		
2380	238		305		
			306		
			400		4
610	61		401		
640	64		402		
3170	317		403		
5000	500		404		
4960	496		405		
590	59		406		
610	61		407		
610	61		408		
820	82		409		
820	82		410		
1540	154		411		
1540	154		412		
1540	154		413		
2890	289		414		
2420	242		415		
2890	289		416		
4040	404		417		
4800	480		418		
3590	359		419		
2070	207		420		
2890	289		421	()	
7500	750		422		
7170	717		423		
8900	890		424		
53	159		425		
			426		
			500		5
9000	900		501		
9000	900		502		
3183.3	393		503		
7290	900		504		
7290	900		505		

7290	900		506		6
7360	736		507		
8900	890		508		
8470	847		509		
			600		
490	49		601		
500	50		602		
500	50		603		
350	35		604		
460	46		605		
430	43		606		
970	97		607		
1020	102		608		
600	60		609		
630	63		610		
760	74		611		
760	76		612		
290	29		613		
280	28		614		
580	58		615		
640	64		616		
590	59		617		
740	74		618		
770	77		619		
840	84		620		
2250	225		621	/	
520	52		622	/	
700	70		623		
6430	643		624		
490	49		625		
640	64		626		
590	59		627		
2120	212		628		
2670	267		629		
2670	267		630		
			700		
7					
250	25		701		
810	81		702		
460	46		703		
410	41		704		
1400	140		705		
140	140		706		
320	32		707		
310	31		708		
460	46		709		
490	49		710		

720	72		711	
3760	376		712	
660	66		713	
290	29		714	
330	33		715	
310	31		716	
300	30		717	
460	46		718	
1020	102		719	
170	17		720	
420	42		721	
290	29		722	
470	47		723	
47.5	19		724	
290	29		725	
1440	144		726	
60	60		727	/
220	22		728	
360	36		729	
1760	176		730	
710	71		731	
			800	
				8
3510	351		801	
3760	376		802	
3540	354		803	
3490	349		804	
3460	346		805	
453	151		806	
453	151		807	
453	151		808	
900	300		809	
4200	420		810	
450	150		811	
31	31		812	
			813	
			900	
				9
3770	377		901	
250	25		902	
3190	319		903	
			904	
			905	
3640	364		906	
3640	364		907	
			908	
			909	
			910	

			911		
			912		
			913		
			914		
			915		
			916		
			1000		10
4000	400		1001		
3760	376		1002		
5000	500		1003		
6370	637		1004		
5970	597		1005		
5890	589		1006		
6430	643		1007		
7040	704		1008		
6170	617		1009		
			1010		
			1100		11
3680	368		1101		
3600	360		1102		
2340	234		1103		
3150	315		1104		
3150	315		1105		
3560	356		1106		
3500	350		1107		
3630	363		1108		
1815	363		1109		
3900	390		1110		
78.6	393		1111		
78.6	393		1112		
3900	390		1113		
234	234		1114		
			1115		
			1200		12
400	40		1201		
2	40		1202		
560	56		1203		
235	47		1204		
56	56		1205		
2610	261		1206		
			1207		
			1300		13
446	223		1301		
			1302		
			1303		

440	220		1304	
4.9	195		1305	
112	112		1306	
860	86		1307	
			1308	
3470	347		1309	
600	60		1310	
600	60		1311	
			1312	
			1313	
			1400	14
0	0		1401	
128.7	39		1402	
195	39		1403	
487.5	39		1404	
1160	116		1405	
1160	116		1406	
1570	157		1407	
260	26		1408	
470	47		1409	
1490	149		1410	
149	149		1411	

2008 : 45

		2008 2006) (2008 2006	2006	2006	
192597	2310695	703	8.3	581	9.4	
68298	347419	672	19.7	542	15.3	
91456	813036	662	11.2	548	14.9	
20027	134091	677	14.9	542	10.0	
160474	1088970	668	14.7	540	12.1	
92764	290543	656	31.9	527	23.0	
36243	178321	656	20.3	535	16.7	
17783	133234	677	13.3	533	17.7	
42655	249510	669	17.1	541	21.7	
17424	82755.3	660	21.1	539	19.1	
26186	108378	674	24.2	536	12.7	
15494	130942	668	11.8	539	15.4	
781403	5867894	680	13.3	556	13.0	

2006 2008 :46

		2008 2006	2006 2006	
4492	6481	69.3	62.5	
3687	5675	65.0	73.7	
4027	8325	48.4	27.1	
7725	16605	46.5	15.0	
6934	15721	44.1	45.4	
5289	12513	42.3	13.4	
1677	4091	41.0	44.4	
9570	23472	40.8	52.8	
15083	37514	40.2	22.3	
4110	10390	39.6	12.7	
14569	36979	39.4	36.1	
6977	18337	38.1	42.8	
5223	13888	37.6	46.6	
3712	10032	37.0	10.3	
3206	9078	35.3	34.5	
9608	28588	33.6	28.3	
2343	7064	33.2	35.6	

5955	18140	32.8	36.1	
3440	10698	32.2	29.1	
6265	19943	31.4	31.9	
29350	102632	28.6	31.4	
17523	61369	28.6	14.2	
7718	27081	28.5	31.5	
5994	21490	27.9	16.0	
1229	4436	27.7	23.1	
16563	61235	27.0	8.4	
6316	24182	26.1	16.6	
1061	4082	26.0	18.3	
7440	28671	25.9	23.4	
1285	5003	25.7	26.6	
9206	35888	25.7	9.0	
35136	139301	25.2	17.5	
1925	7762	24.8	26.2	
4214	17225	24.5	16.2	
2195	8979	24.4	5.4	
9946	40805	24.4	18.0	
9644	40017	24.1	23.7	
6582	27499	23.9	13.1	
27621	132080	20.9	8.6	
3397	16328	20.8	29.7	
31933	154735	20.6	16.0	
2171	10937	19.8	13.0	
19621	103339	19.0	12.3	
16289	90227	18.1	13.6	
5912	33023	17.9	5.1	
21147	118933	17.8	5.6	
8988	51876	17.3	15.0	
2771	16765	16.5	8.7	
13687	82978	16.5	8.2	
2218	13891	16.0	24.7	
2621	16796	15.6	22.7	
5056	33317	15.2	36.9	
1025	6848	15.0	9.4	
1663	11420	14.6	18.9	
7412	52827	14.0	13.1	
1713	12489	13.7	11.4	
6225	46115	13.5	4.4	
3882	29385	13.2	17.1	

7702	63727	12.1	5.9	
1020	8608	11.8	15.5	
68714	604565	11.4	12.2	
1245	11082	11.2	8.6	
46481	420114	11.1	11.9	
1238	11599	10.7	1.4	
2358	22936	10.3	0.0	
812	8029	10.1	10.4	
664	6580	10.1	16.6	
581	6087	9.5	44.5	
775	8300	9.3	1.9	
50702	551794	9.2	10.7	
4667	51202	9.1	12.0	
38656	428727	9.0	11.1	
24075	285973	8.4	19.2	
1628	19862	8.2	16.2	
1065	13084	8.1	14.3	
6325	86636	7.3	8.5	
870	12888	6.7	14.2	
557	8442	6.6	12.1	
857	13311	6.4	17.5	
522	8345	6.3	0.0	
3568	59930	6.0	12.0	
759	12939	5.9	9.2	
3840	76398	5.0	13.0	
10339	227276	4.5	6.6	
11667	287430	4.1	8.0	
4101	106483	3.9	6.5	
132	9499	1.4	5.9	
2911	414916	0.7	2.0	
0	14962	0.0	22.4	

2006

:47

		2008 2006	2006 2006	
1925	7762	24.8	26.2	
3397	16328	20.8	29.7	
5056	33317	15.2	36.9	
581	6087	9.5	44.5	

:48

		2008 2006	2006 2006	
7725	16605	46.5	15.0	
5289	12513	42.3	13.4	
15083	37514	40.2	22.3	
4110	10390	39.6	12.7	
3712	10032	37.0	10.3	
17523	61369	28.6	14.2	
5994	21490	27.9	16.0	
1229	4436	27.7	23.1	
16563	61235	27.0	8.4	
6316	24182	26.1	16.6	
1061	4082	26.0	18.3	
7440	28671	25.9	23.4	
9206	35888	25.7	9.0	
35136	139301	25.2	17.5	

2006

2008 2006

:49

		2008 2006	2006 2006	
4492	6481	69.3	62.5	
3687	5675	65.0	73.7	
4027	8325	48.4	27.1	
6934	15721	44.1	45.4	
1677	4091	41.0	44.4	
9570	23472	40.8	52.8	
14569	36979	39.4	36.1	
6977	18337	38.1	42.8	
5223	13888	37.6	46.6	
3206	9078	35.3	34.5	
9608	28588	33.6	28.3	
2343	7064	33.2	35.6	
5955	18140	32.8	36.1	
3440	10698	32.2	29.1	
6265	19943	31.4	31.9	
29350	102632	28.6	31.4	
7718	27081	28.5	31.5	
1285	5003	25.7	26.6	

2006 2006 :50

		2006 2006	
3687	5675	73.7	
4492	6481	62.5	
9570	23472	52.8	
5223	13888	46.6	
6934	15721	45.4	
581	6087	44.5	
1677	4091	44.4	
6977	18337	42.8	
5056	33317	36.9	
14569	36979	36.1	
5955	18140	36.1	
2343	7064	35.6	
3206	9078	34.5	
6265	19943	31.9	
7718	27081	31.5	
29350	102632	31.4	
3397	16328	29.7	
3440	10698	29.1	
9608	28588	28.3	
4027	8325	27.1	
1285	5003	26.6	
1925	7762	26.2	